

**REGIONAL SPECIALISED METEOROLOGICAL CENTRE-TROPICAL CYCLONES, NEW DELHI
TROPICAL WEATHER OUTLOOK**

DEMS-RSMC TROPICAL CYCLONES NEW DELHI DATED 22.09.2021

TROPICAL WEATHER OUTLOOK FOR NORTH INDIAN OCEAN (THE BAY OF BENGAL OF BENGAL OF BENGAL AND ARABIAN SEA) VALID FOR NEXT 120 HOURS ISSUED AT 0600 UTC OF 22.09.2021 BASED ON 0300 UTC OF 22.09.2021.

BAY OF BENGAL:

YESTERDAY'S LOW PRESSURE AREA LAY OVER SOUTHEAST JHARKHAND & NEIGHBOURHOOD WITH THE ASSOCIATED CYCLONIC CIRCULATION EXTENDING UPTO 5.8 KM ABOVE MEAN SEA LEVEL PERSISTS AT 0300 UTC OF 22ND SEPTEMBER, 2021.

LOW PRESSURE AREA LAY OVER SOUTHEAST JHARKHAND ADJOINING SOUTHWEST GANGETIC WEST BENGAL NORTH ODISHA & N/HOOD. ASSOCIATED SCATTERED TO BROKEN LOW AND MEDIUM CLOUDS WITH INTENSE TO VERY INTENSE CONVECTION LAY OVER NORTHEAST ODISHA SOUTH GANGETIC WEST BENGAL (MINIMUM CTT -75⁰C) AND MODERATE TO INTENSE CONVECTION LAY OVER SOUTH JHARKHAND & N/HOOD.

A LOW PRESSURE AREA IS LIKELY TO FORM OVER NORTHEAST & ADJOINING EASTCENTRAL BAY OF BENGAL AROUND 24TH EVENING. THEN IT IS LIKELY TO MOVE WEST-NORTHWESTWARDS TOWARDS ODISHA COAST DURING THE SUBSEQUENT 48 HOURS.

SCATTERED LOW AND MEDIUM CLOUDS WITH EMBEDDED INTENSE TO VERY INTENSE CONVECTION LAY OVER BAY OF BENGAL & ANDAMAN SEA.

PROBABILITY OF CYCLOGENESIS (FORMATION OF DEPRESSION) DURING NEXT 120 HRS:

24 HOURS	24-48 HOURS	48-72 HOURS	72-96 HOURS	96-120 HOURS
NIL	NIL	NIL	NIL	NIL

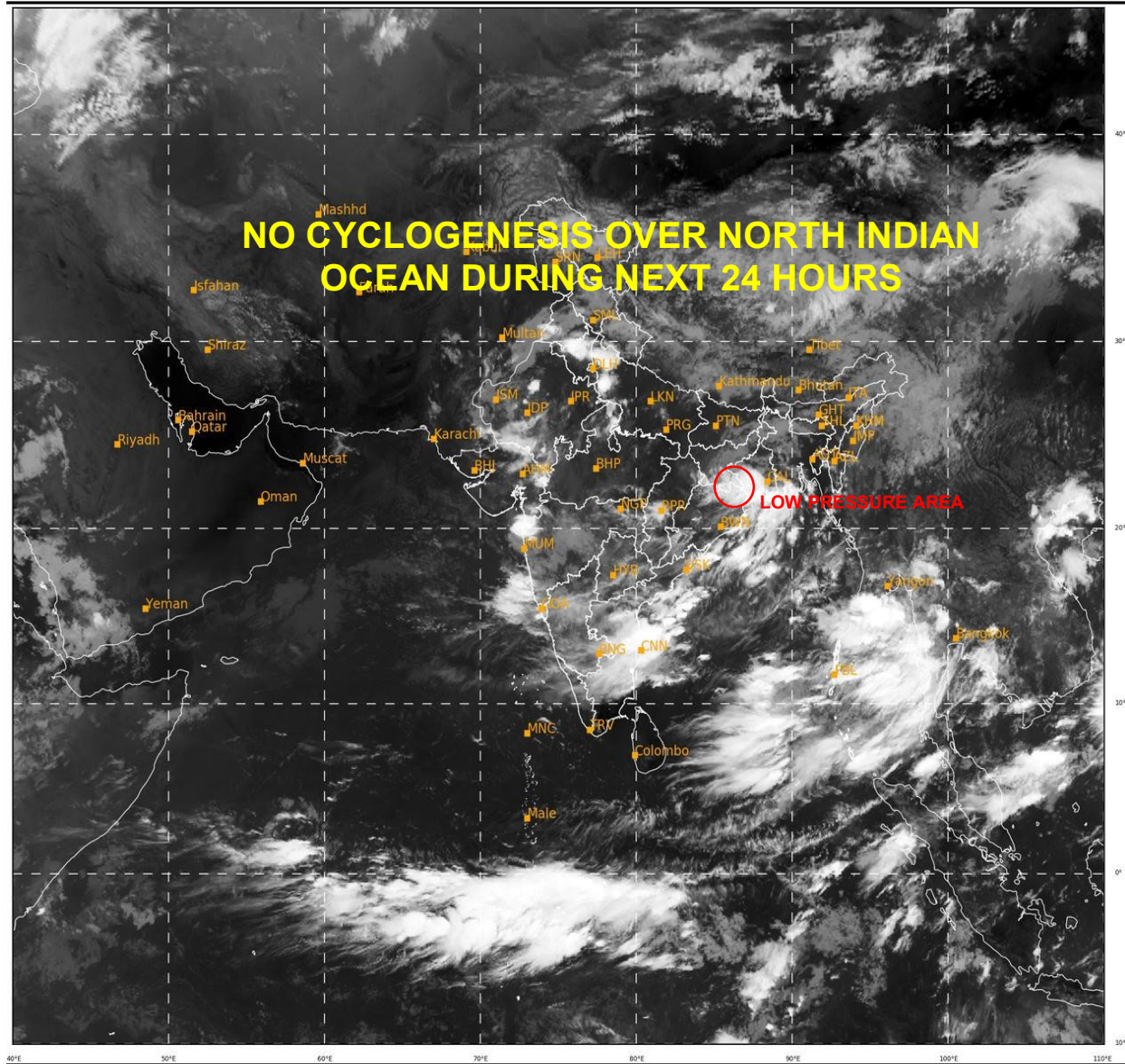
ARABIAN SEA:

SCATTERED LOW AND MEDIUM CLOUDS WITH EMBEDDED MODERATE TO INTENSE CONVECTION LAY OVER GULF OF CAMBAY AND EAST-CENTRAL ARABIAN SEA OFF MAHARASHTRA-GOJA-KARNATAKA COASTS. SCATTERED LOW AND MEDIUM CLOUDS WITH EMBEDDED ISOLATED WEAK TO MODERATE CONVECTION LAY OVER SOUTHEAST ARABIAN SEA.

PROBABILITY OF CYCLOGENESIS (FORMATION OF DEPRESSION) DURING NEXT 120 HRS:

24 HOURS	24-48 HOURS	48-72 HOURS	72-96 HOURS	96-120 HOURS
NIL	NIL	NIL	NIL	NIL

REMARKS: NIL



456

927

IMD, DELHI